



Harting Road, London, SE9 4JP

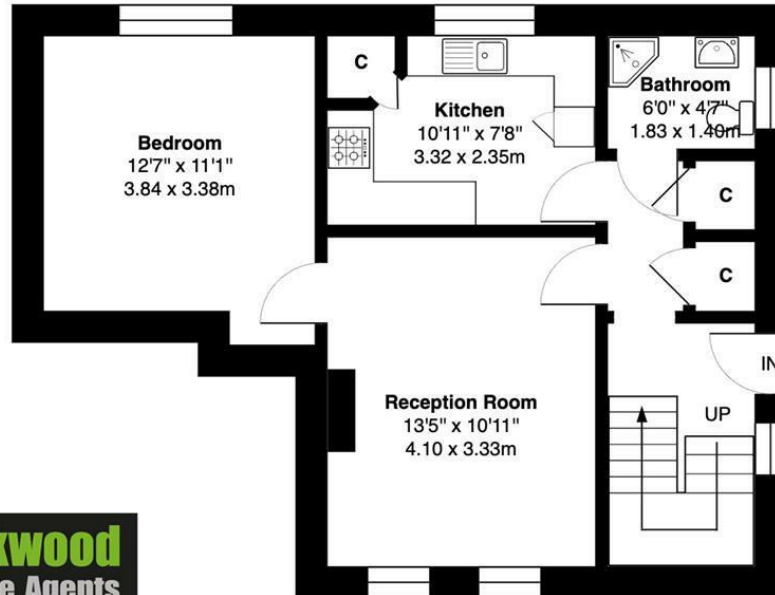
Offers Over £200,000

A good sized one bedroom first floor Maisonette with it's own private garden. The accommodation offers a 13'5 reception room, 12'7 bedroom plus a 10'11 kitchen. There is also a shower room and plenty of storage space. Local shops and bus routes are close by. Please contact us to arrange an internal inspection. Bromley borough council tax band B. Service charges £899.58 pa. Ground rent £10.00pa. Lease 177 years on completion.



Harting Road, SE9

Approximate Gross Internal Area = 514 sq ft / 47.7 sq m



First Floor

This plan is for layout guidance only and not drawn to scale unless stated. Window and door openings are approximate. Whilst every care is taken in the preparation of this plan, we would advise interested parties to check all dimensions, shapes and compass bearings prior to making any decisions reliant upon them. No liability is accepted for any errors. By Prime Square Photography / Copyright 2025

Area Map



Energy Efficiency Graph

Energy Efficiency Rating		Current	Potential
Very energy efficient - lower running costs			
(92 plus) A			
(81-91) B			
(69-80) C			
(55-68) D			
(39-54) E			
(21-38) F			
(1-20) G			
Not energy efficient - higher running costs			
England & Wales		EU Directive 2002/91/EC	
Environmental Impact (CO ₂) Rating		Current	Potential
Very environmentally friendly - lower CO ₂ emissions			
(92 plus) A			
(81-91) B			
(69-80) C			
(55-68) D			
(39-54) E			
(21-38) F			
(1-20) G			
Not environmentally friendly - higher CO ₂ emissions			
England & Wales		EU Directive 2002/91/EC	

These particulars, whilst believed to be accurate are set out as a general outline only for guidance and do not constitute any part of an offer or contract. Intending purchasers should not rely on them as statements of representation of fact, but must satisfy themselves by inspection or otherwise as to their accuracy. No person in this firm's employment has the authority to make or give any representation or warranty in respect of the property.